

XGP 2: Pneumatic control-pressure adjuster

Areas of application

Remote adjuster for setpoint adjustment of pneumatic controllers (e.g. Centair), plus manual control of small pneumatic control units.

Features

- Setting knob with interchangeable scales and 2 stops for limiting the setting range or locking the setting
- Suitable for fitting into panels or for recessed mounting
- Complies with directive 97/23/EC Art. 3.3 on pressure equipment

Technical description

- Supply pressure 1.3 bar \pm 0.1

Type	Setting range bar	Setting span ¹⁾ bar	Scale ²⁾ °C	Weight kg
XGP 2 F001	0...1,2	–	5...35	0,029
XGP 2 F002	–	\pm 0,1	\pm 3,75	0,029
Supply pressure ³⁾	1,3 \pm 0,1 bar		Permissible ambient temp	0...55 °C
Air capacity, air consumption				
with restrictor \varnothing 0,14 mm	16 l _n /h	Connection diagram		A03462
with restrictor \varnothing 0,2 mm	33 l _n /h	Dimension drawing		M297201
Output pressure	0...1,2 bar	Fitting instructions		MV 7320

Accessories

- 0303124 000*** Recessed junction box
0297212 000* Intermediate plate for fitting into recessed junction box
0296218 000* Buckle-proof connector-adaptor for push-on installation
0296990 000* Buckle-proof connector-adaptor for screw-type installation; MV 7322

*) Dimension drawing or wiring diagram are available under the same number

- 1) Zero point is variable between 0,2 and 1,0 bar; factory setting is 0,6 bar.
 2) F001: rear 0...120 °C. Included are: 20...90 %rh, % scale, gradation 5, gradation 6.
 F002: rear \pm 8,75 %rh. Inscriptible scale is included.
 3) See Section 60 on regulations concerning the quality of supply air, especially at low ambient temperature.



Operation

The output pressure rises when the adjuster knob is turned in a clockwise direction.

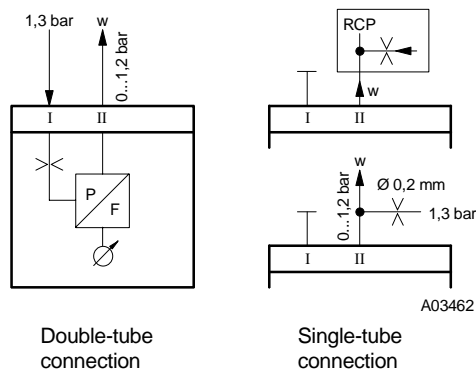
Single-tube connection

The transmitter is supplied with air via connector no. II through either an external restrictor (\varnothing 0,2 mm) or the restrictor (\varnothing 0,14 mm) in connector no. 6 in the *centair* controllers. Connector no. I remains closed off by the cap (included in delivery).

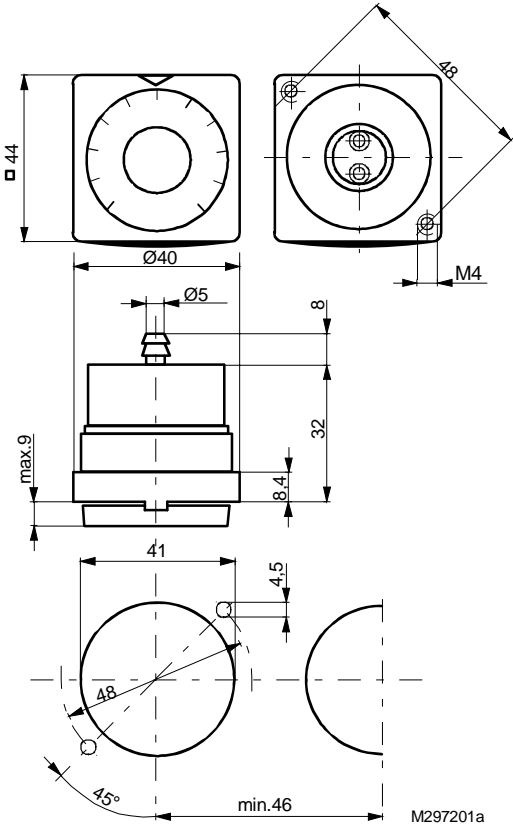
Double-tube connection

The transmitter is supplied with air via the integrated restrictor (\varnothing 0,2 mm). Connector no. I is for supply pressure; no. II for output pressure.

Connection diagram



Dimension drawing



Accessories

